

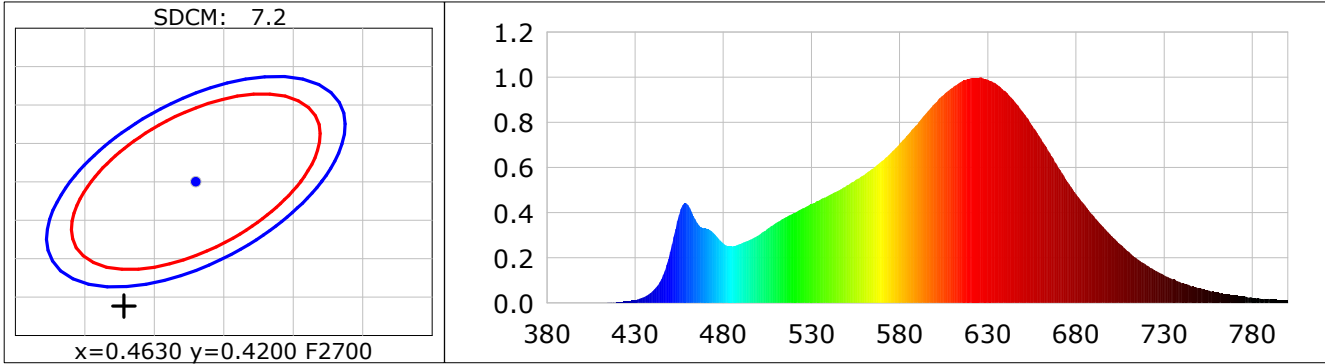
Lightsource Test Report

Product Infomation

Product Category: LED STRIP	Product Type: LED STRIP
Product Spec: OGMA 4	Product Number: 470
Manufacturer: TECSOLELED S.L.	Buyer: TECSOLELED S.L.

CIE Colorimetric Parameters

Chromaticity coordinates: $x=0.4578$ $y=0.4038$ $u(u')=0.2643$ $v=0.3496$ $v'=0.5244$
 CCT: $T_c=2675K$ ($duv=-0.00237$) Color Ratio: $R=0.272$ $G=0.698$ $B=0.030$
 Peak Wavelength: 625.9nm Half Bandwidth: 132.9nm
 Dominant Wavelength: 585.1nm Color Purity: 0.587
 CRI: $R_a=92.4$, $avgR(1\sim14)=91.0$, $avgR(1\sim15)=91.0$ TM30: $R_f=89$, $R_g=96$
 GAI: $GAI_BB_8=104.5$, $GAI_BB_15=112.2$, $GAI_EES=50.0$
 R1 =96 R2 =98 R3 =94 R4 =93 R5 =96 R6 =93 R7 =87 R8 =81
 R9 =63 R10=98 R11=95 R12=82 R13=98 R14=98 R15=91
 Color Quality Scale: $Q_a=90.7$, $Q_f=92.3$, $Q_p=94.6$, $Q_g=95.0$
 Q1 =86 Q2 =93 Q3 =93 Q4 =89 Q5 =88 Q6 =90 Q7 =94 Q8 =92
 Q9 =95 Q10=97 Q11=95 Q12=93 Q13=91 Q14=88 Q15=87



Photometric Parameters

Luminous Flux: 2181.6 lm Efficiency: 126.59 lm/W Radiant Power: 7.738 W
 Total mains efficacy: 117.22 lm/W Energy Efficiency Class: E (EU 2019/2015)

Electric Parameters

Voltage: 24.000V Current: 0.7181A Power: 17.23W
 Power Factor: 1.0000 Frequency: 0.00Hz

Test Infomation

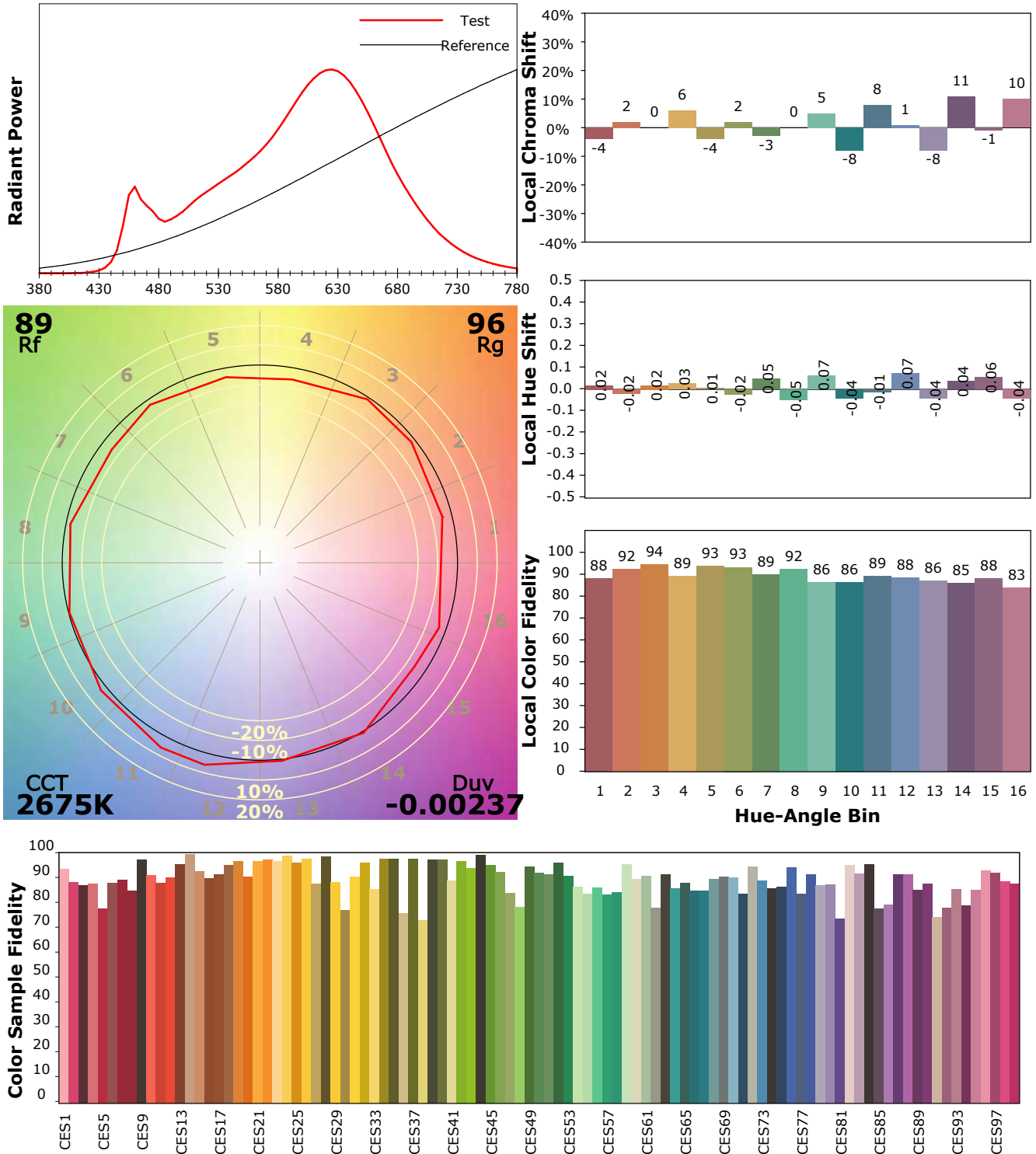
Scan Range: 380~800:1nm Photometric Method: sphere-spectroradiometer
 Stabilization Time: 30 Sec ALC.: 1.0000 Photometric Condition: Sphere diameter: 1.50m, 4PI
 Max of Signal: 50406 (2145) CCD Integration Time: 326.39 ms

IES TM-30-18 Color Rendition Report

Product Information

Product Category: LED STRIP
 Product Spec: OGMA 4
 Manufacturer: TECSOLED S.L.

Product Type: LED STRIP
 Product Number: 470
 Buyer: TECSOLED S.L.



Condition: Tx:19.4'C, Ti:17.4'C, R.H.:60%
 Test Lab: TECSOLED S.L.
 Operator: JORDAN GIL DIAZ

Test Device: Inventfine CMS-2S (Plus)
 Test Time: 2021-11-10 14:20:18
 Inspector: